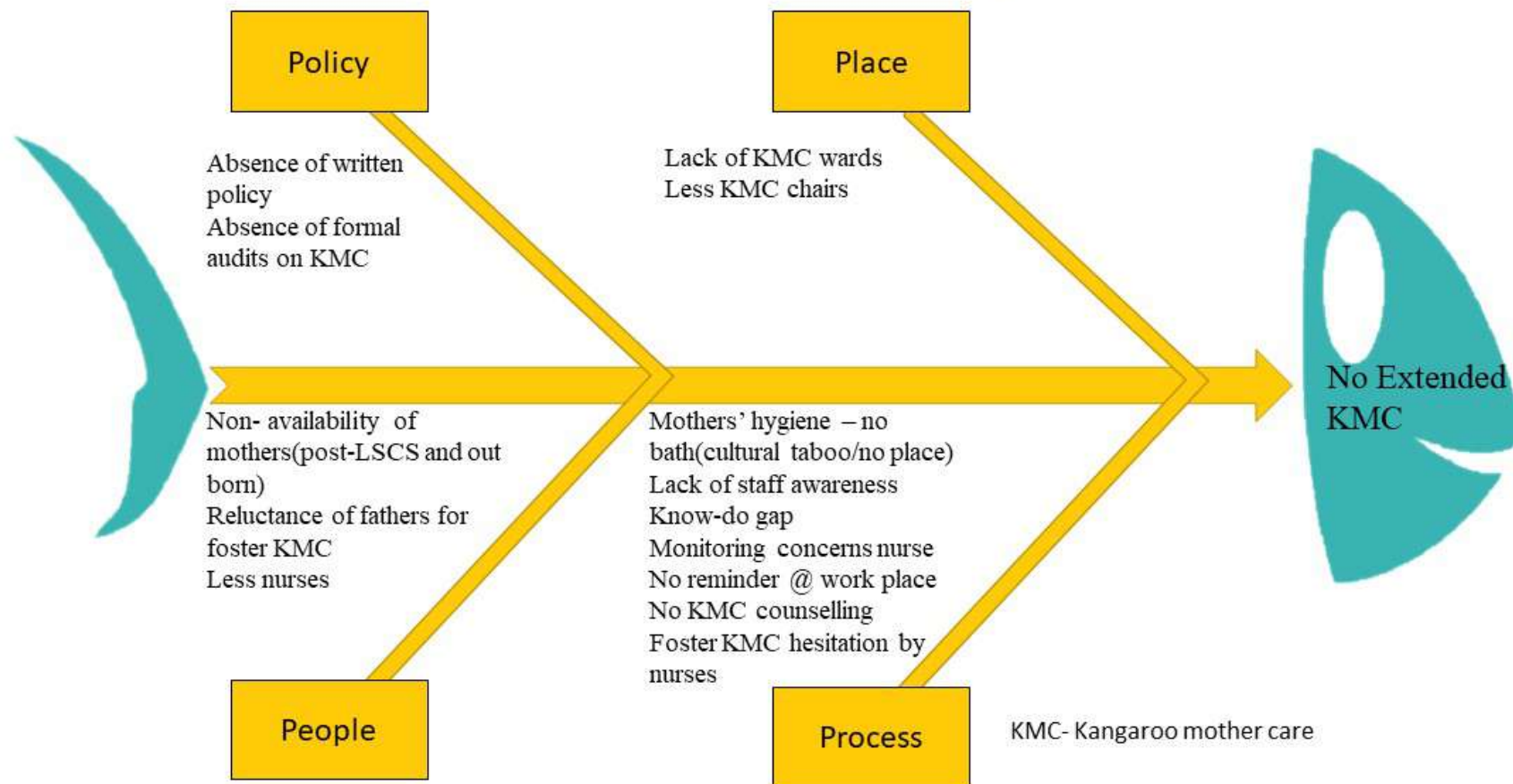
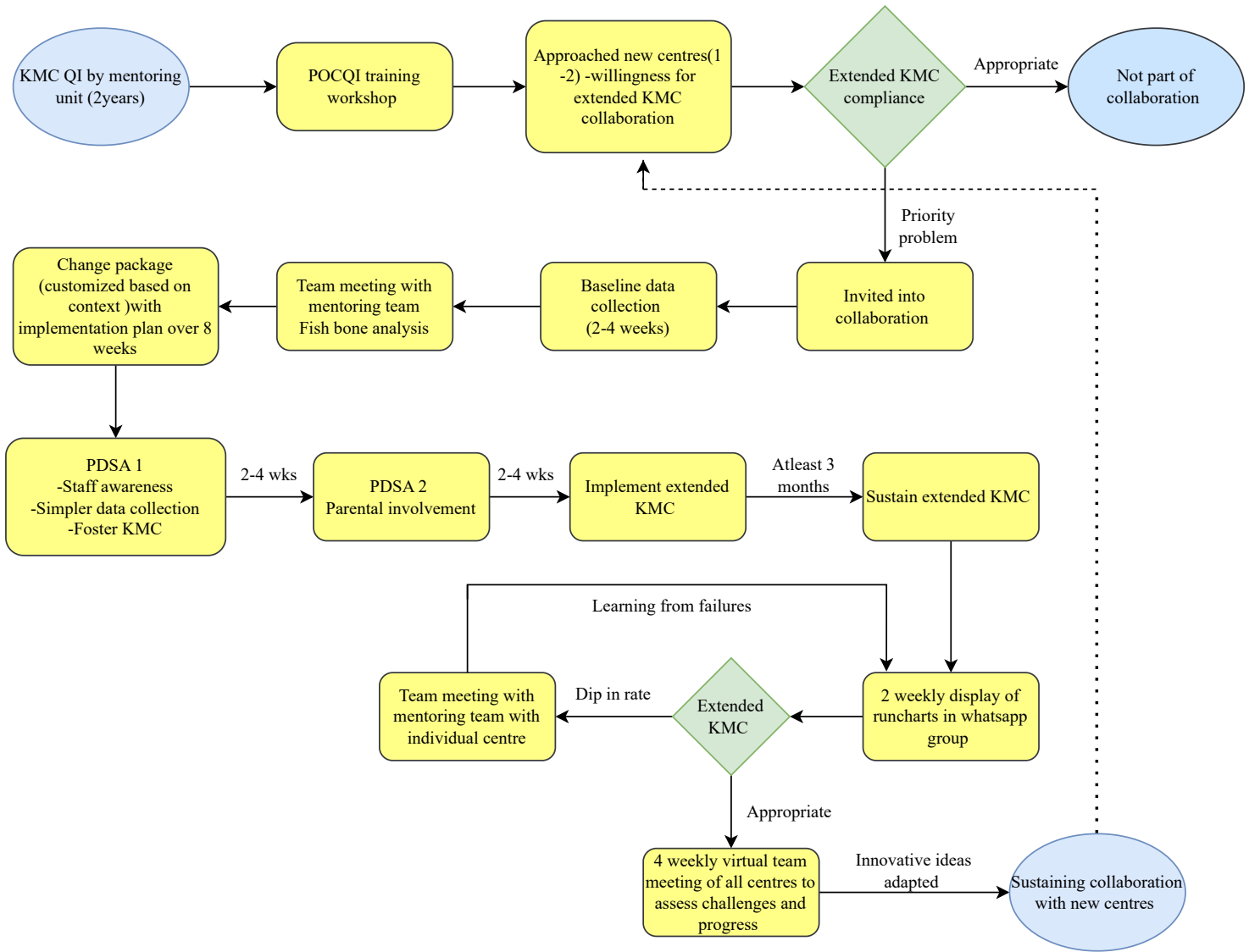


# Fish bone analysis



Summary Table: Summary of interventions

Quality indicators	I	II	III	IV	V	VI
<b>Implementation phase</b>						
Awareness of healthcare staff through virtual/in-person CME	✓	✓	Led CME	✓	✓	✓
Available mothers-sponging should be sufficient instead of bath	✓	✓	✓			
Provision of KMC chairs	✓				✓	
Foster KMC motivation	✓	✓	✓	✓	✓	✓
Removal of restrictions on visiting hours for parents (Policy).	✓	✓	✓	✓	✓	✓
Prescribing KMC in routine treatment chart/including it on the dashboard	✓	✓	✓	✓	✓	✓
Activities involving parental participation i.e., KMC counseling competition, awareness session, success celebration with parents.	✓	✓	✓	✓		✓
<b>Sustenance phase</b>						
KMC champion/star	✓	✓	✓	✓		✓
Weekly parental counseling sessions on KMC	✓	✓			✓	
Assessing knowledge through quiz/MCQ sessions for nurses	✓	✓	✓	✓	✓	✓



SOP of KMC collaboration

Abbreviations: KMC- Kangaroo mother care, QI- Quality improvement, POCQI- Point of care quality improvement training, PDSA- Plan-Do-Study-Act cycles.