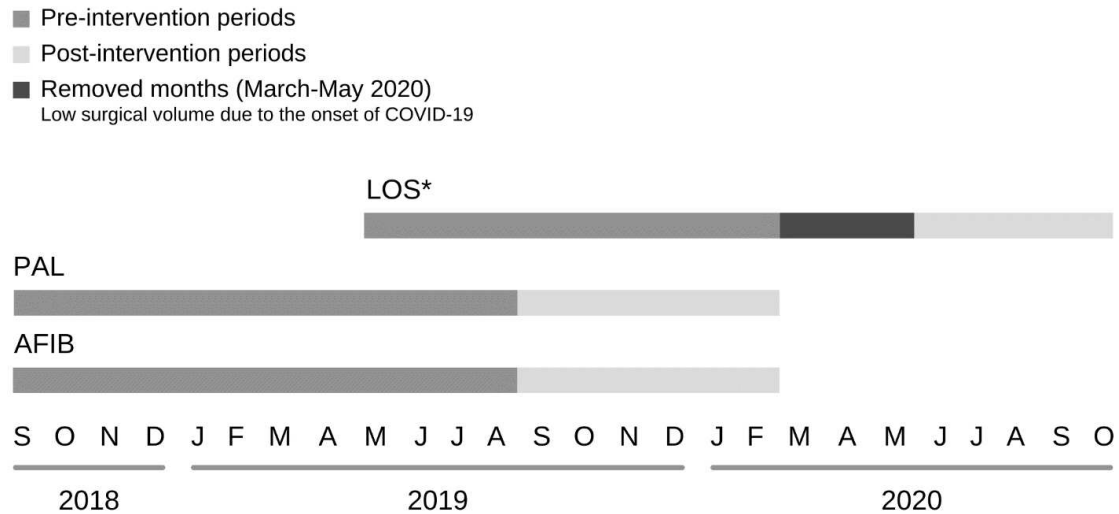
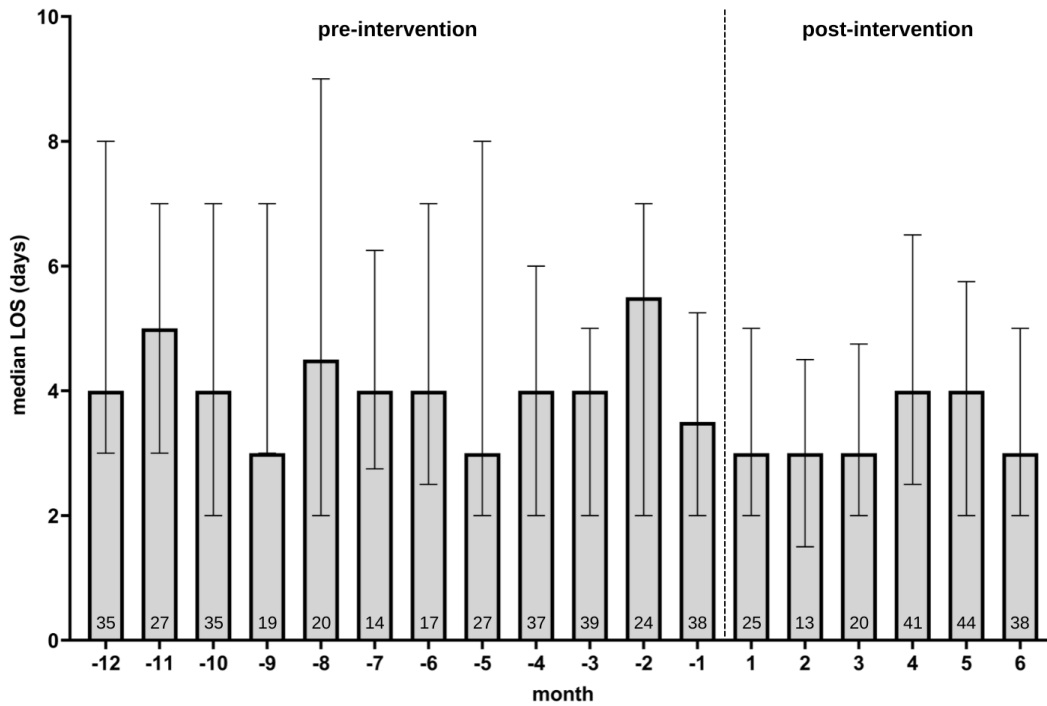


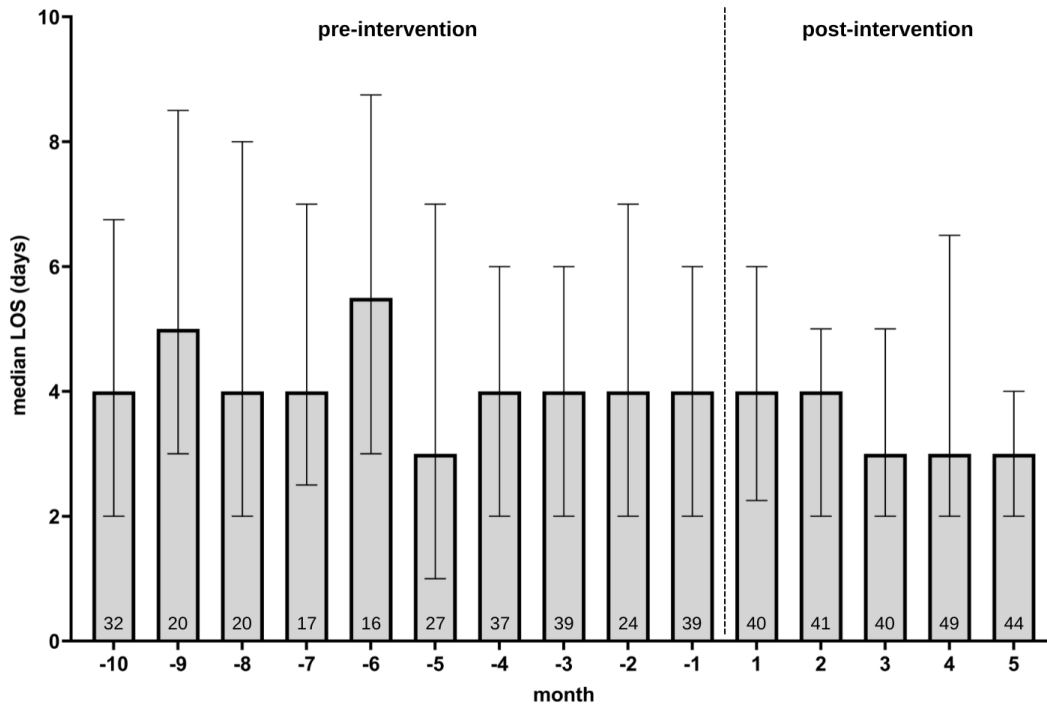
Supplemental Figure 1. Flowchart of PD seminar workflow, from pre-seminar preparation to post-seminar implementation.



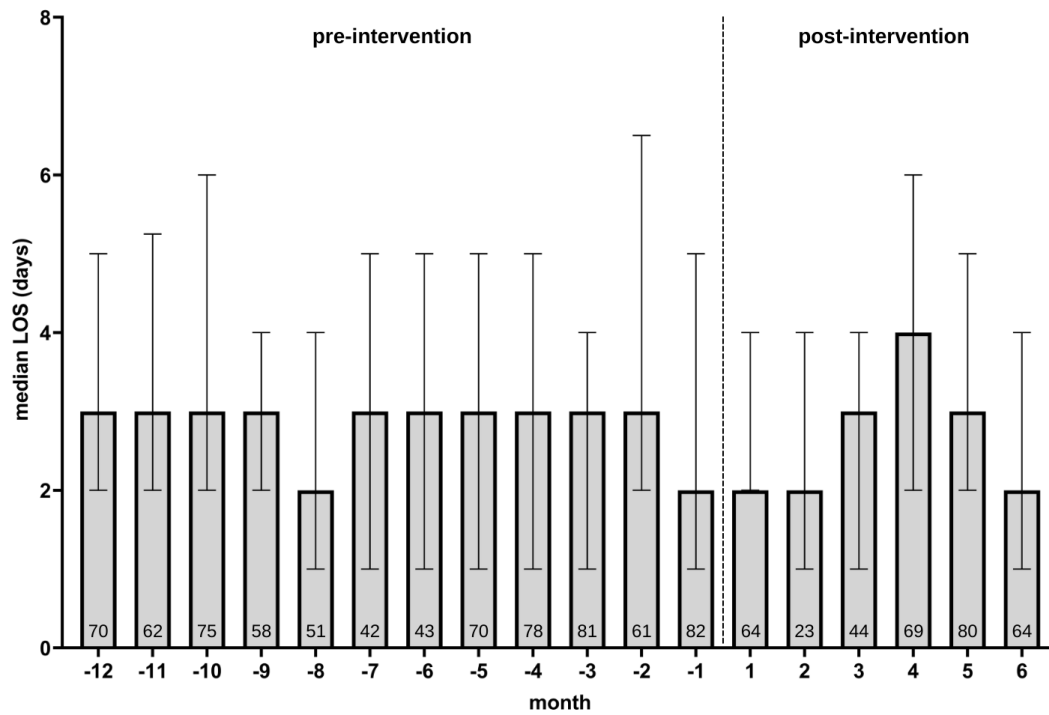
Supplemental Figure 2. Pre- and post-intervention ranges by multicenter seminar. March to May 2020 were removed from the multicenter seminars analyses due to low surgical volume induced by the advent of COVID-19. Asterisk (*) Indicates that ranges were the same for LOS analyses of both lobectomy as well as of all procedures (lobectomy, segmentectomy, and wedge resection). If the seminar took place on a date before the 15th of the month, then the respective month was considered the first month of post-intervention; conversely, if the seminar took place on a date after the 15th, then the respective month was considered the last month of pre-intervention.



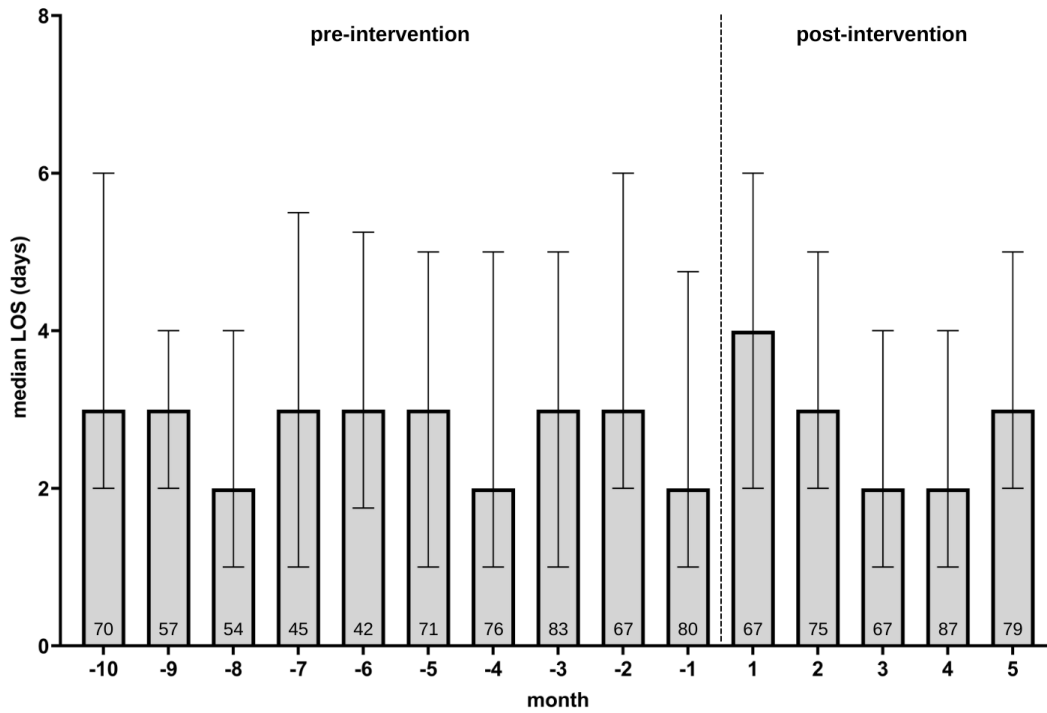
Supplemental Figure 3. Local seminar analysis of median LOS for lobectomy. Error bars represent interquartile range (IQR).



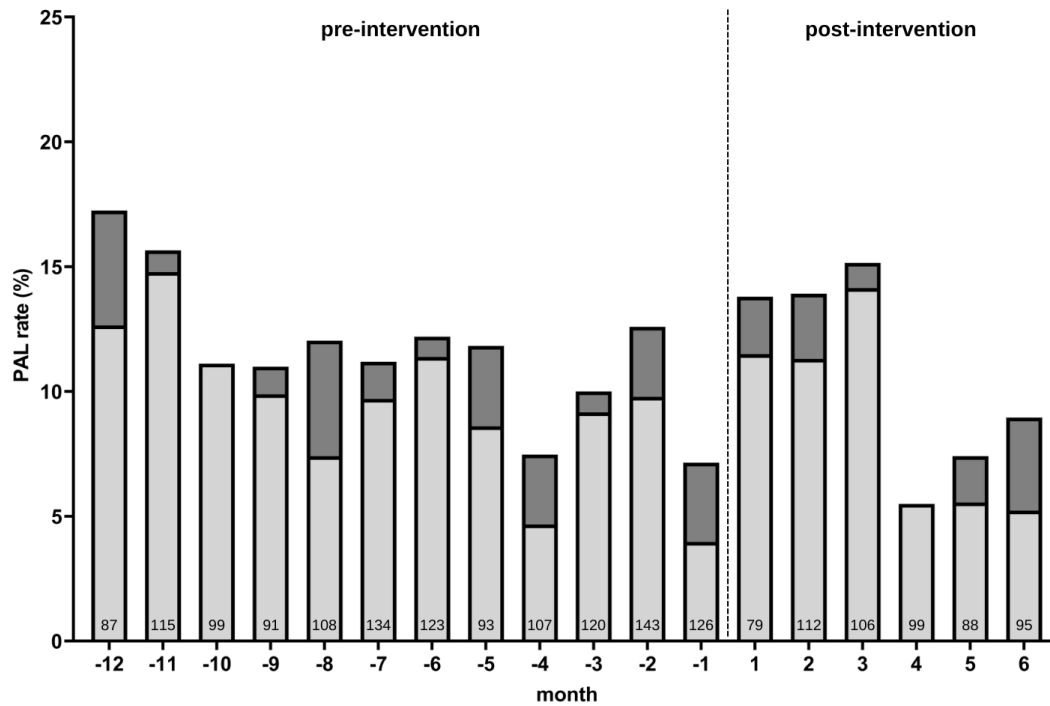
Supplemental Figure 4. Multicenter seminar analysis of median LOS for lobectomy. Three months (March-May 2020) between Month -1 and Month 1 have been removed due to low surgical volume induced by the onset of COVID-19. Error bars represent interquartile range (IQR).



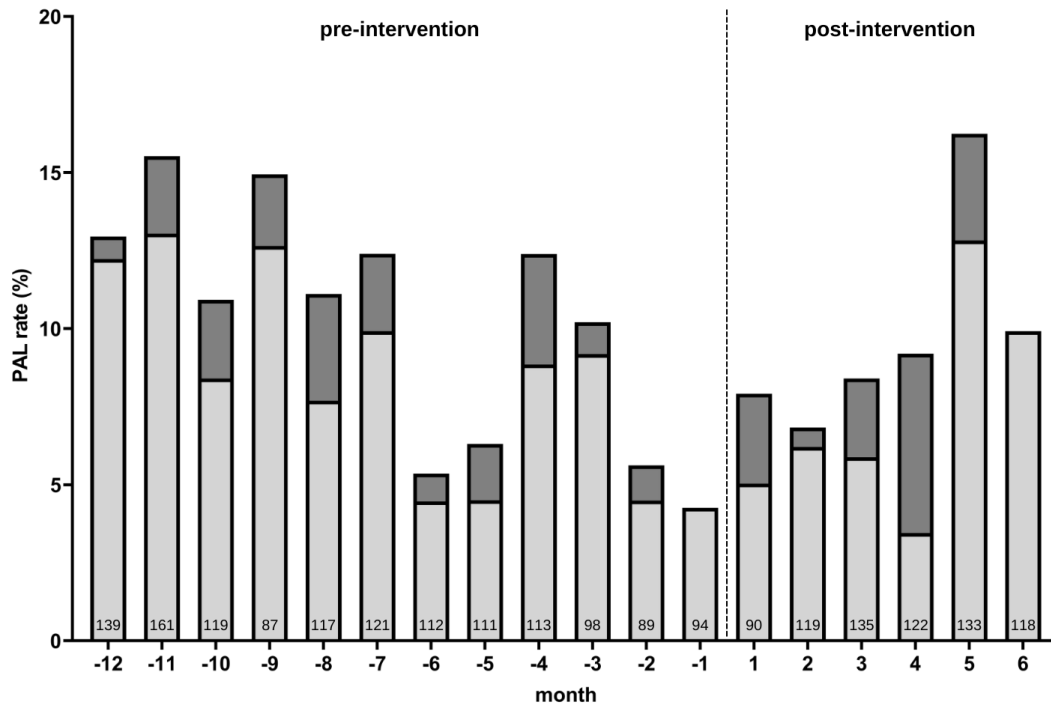
Supplemental Figure 5. Local seminar analysis of median LOS across lobectomy, segmentectomy, and wedge resection. Error bars represent interquartile range (IQR).



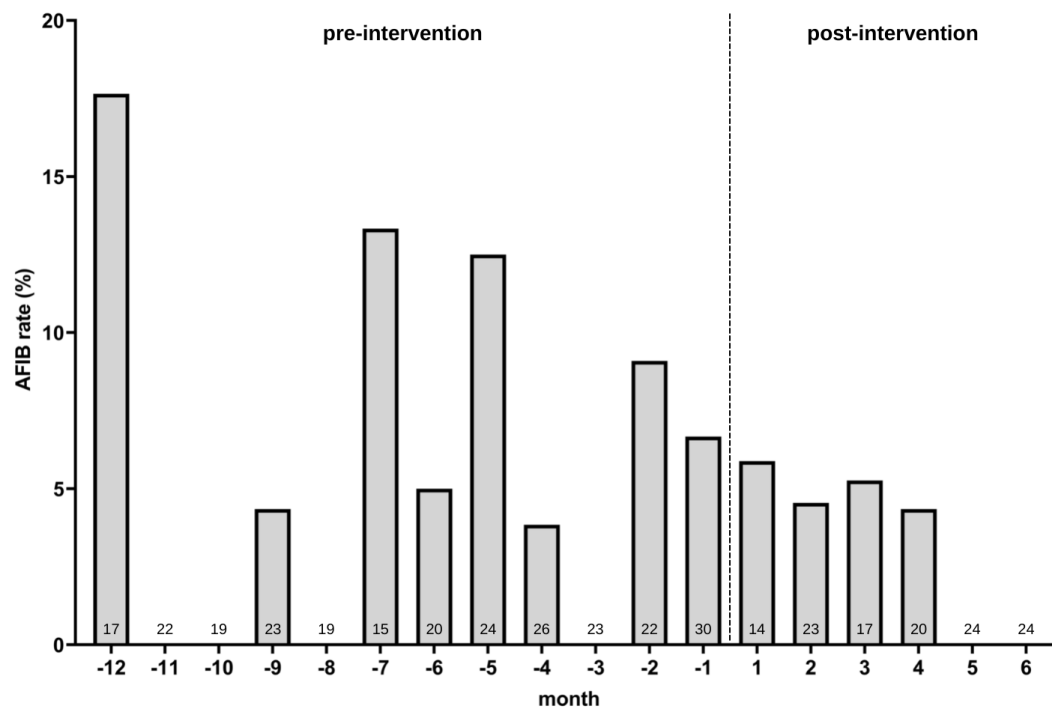
Supplemental Figure 6. Multicenter seminar analysis of median LOS across lobectomy, segmentectomy, and wedge resection. Three months (March-May 2020) between Month -1 and Month 1 have been removed due to low surgical volume induced by the onset of COVID-19. Error bars represent interquartile range (IQR).



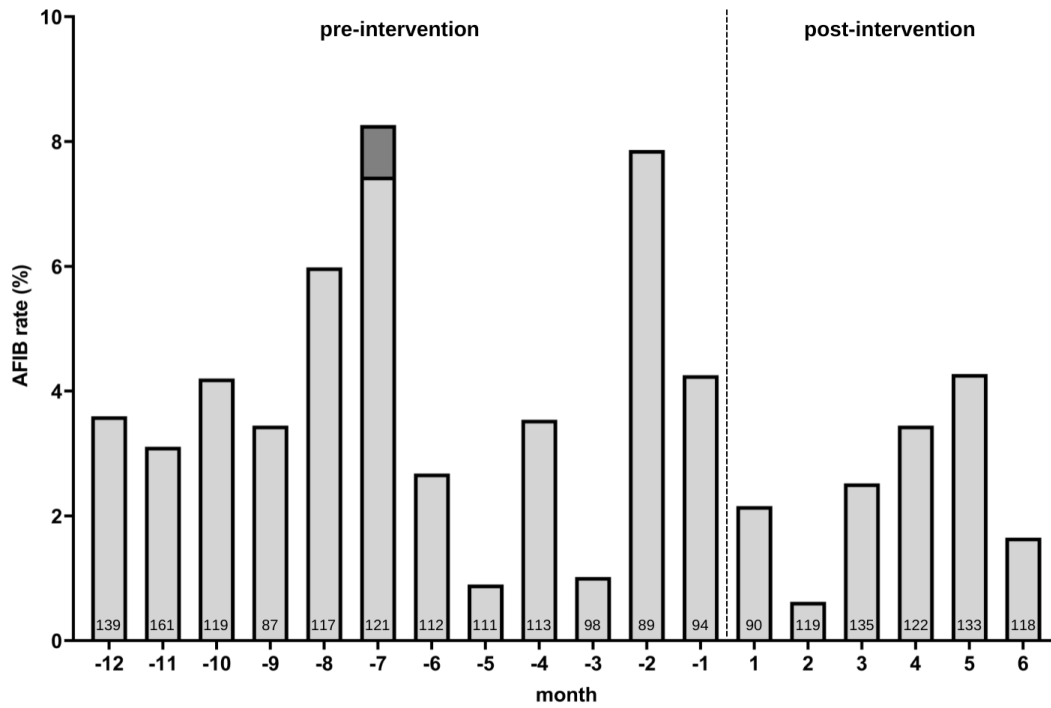
Supplemental Figure 7. Local seminar analysis of PAL rates by month across lobectomy, segmentectomy, and wedge resection.



Supplemental Figure 8. Multicenter seminar analysis of PAL rates by month across lobectomy, segmentectomy, and wedge resection.



Supplemental Figure 9. Local seminar analysis of AFIB rates across lobectomy, segmentectomy, and wedge resection.



Supplemental Figure 10. Multicenter seminar analysis of AFIB rates across lobectomy, segmentectomy, and wedge resection.